



Adifix HEXL Series



New Jersey Location

50 Page Road, Clifton, NJ 07012

Phone. 973.778.0122 • Fax. 973.778.1124

South Carolina Location

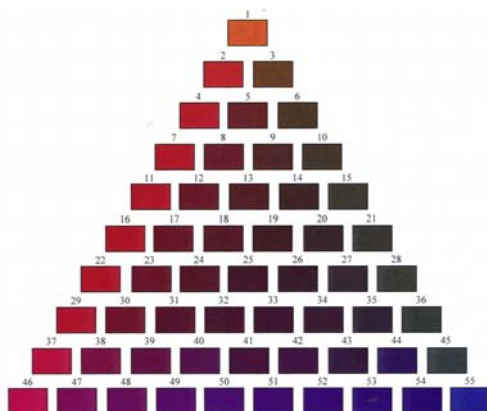
105 Wood Street, Greenville, SC 29611

Phone. 864.295.1170 • Fax. 864.295.5606

www.greenvillecolorants.com • Customer Service. 800.832.8985 Fax. 800.763.1001

Trichromatic Color Matching Of Adifix HEXL Dyes On Cellulose Fibers

2.0% Adifix Yellow HEXL



2% Adifix Crimson HEXL

2% Adifix Blue HEXL

Recipe (%o.w.f.)

Y: Adifix Yellow HEXL

R: Adifix Crimson HEXL

B: Adifix Blue HEXL

NO	1	2	3	4	5	6	7	8	9	10	11	12	13	14	15	16	17	18
Y	2.00	1.80	1.80	1.60	1.60	1.60	1.40	1.40	1.40	1.40	1.20	1.20	1.20	1.20	1.20	1.00	1.00	1.00
R		0.20		0.40	0.20		0.60	0.40	0.20		0.80	0.60	0.40	0.20		1.00	0.80	0.60
B			0.20		0.20	0.40		0.20	0.40	0.60		0.20	0.40	0.60	0.80		0.20	0.40
NO	19	20	21	22	23	24	25	26	27	28	29	30	31	32	33	34	35	36
Y	1.00	1.00	1.00	0.80	0.80	0.80	0.80	0.80	0.80	0.80	0.60	0.60	0.60	0.60	0.60	0.60	0.60	0.60
R	0.40	0.20		1.20	1.00	0.80	0.60	0.40	0.20		1.40	1.20	1.00	0.80	0.60	0.40	0.20	
B	0.60	0.80	1.00		0.20	0.40	0.60	0.80	1.00	1.20		0.20	0.40	0.60	0.80	1.00	1.20	1.40
NO	37	38	39	40	41	42	43	44	45	46	47	48	49	50	51	52	53	54
Y	0.20	0.20	0.20	0.20	0.40	0.40	0.40	0.20	0.20									
R	1.80	1.60	1.40	1.20	0.80	0.60	0.40	0.20		2.00	1.80	1.60	1.40	1.20	1.00	0.80	0.60	0.40
B		0.20	0.40	0.60	0.80	1.00	1.20	1.60	1.80		0.20	0.40	0.60	0.80	1.00	1.20	1.40	1.60

Dye Name	Light 63°C * 60hr	Perspiration Acid * Alkaline	Water	Washing
2% Adifix Yellow HEXL	5	5 * 4-5	5	5
2% Adifix Crimson HEXL	4	4-5 * 5	5	4-5
2% Adifix Red HEXL	4	3-4 * 4	4-5	4-5
2% Adifix Blue HEXL	4	4 * 4	4-5	4-5
2% Adifix Navy HEXL	4	5 * 4-5	5	4-5

**Disclaimer:

Seller assumes no obligation or liability, whether in contract, tort, negligence, strict liability or misrepresentation for any advice or assistance given Buyer in relation to the merchandise, such advice or assistance, written or oral, being given without charge and accepted by Buyer's request and at his sole and exclusive risk. Samples will be made available at Buyer's request. Buyers are urged to make their own tests of any product described herein or of any proposed application with respect to which advice or assistance from Seller may be sought.

The fastness properties of the enclosed dyeings are dependent upon the conditions to which they are subjected, and may vary considerably if the dyed fabric is treated with additional chemicals such as fixing or finishing agents. Consequently, the dyed/finished fabric should be tested to assure that the fastness properties meet the necessary requirement. Not all shades can be produced with desired fastness properties. This point should be carefully considered before putting shades into production. The information given is based on work done in our laboratories; consideration should be given to possible variations under local conditions.